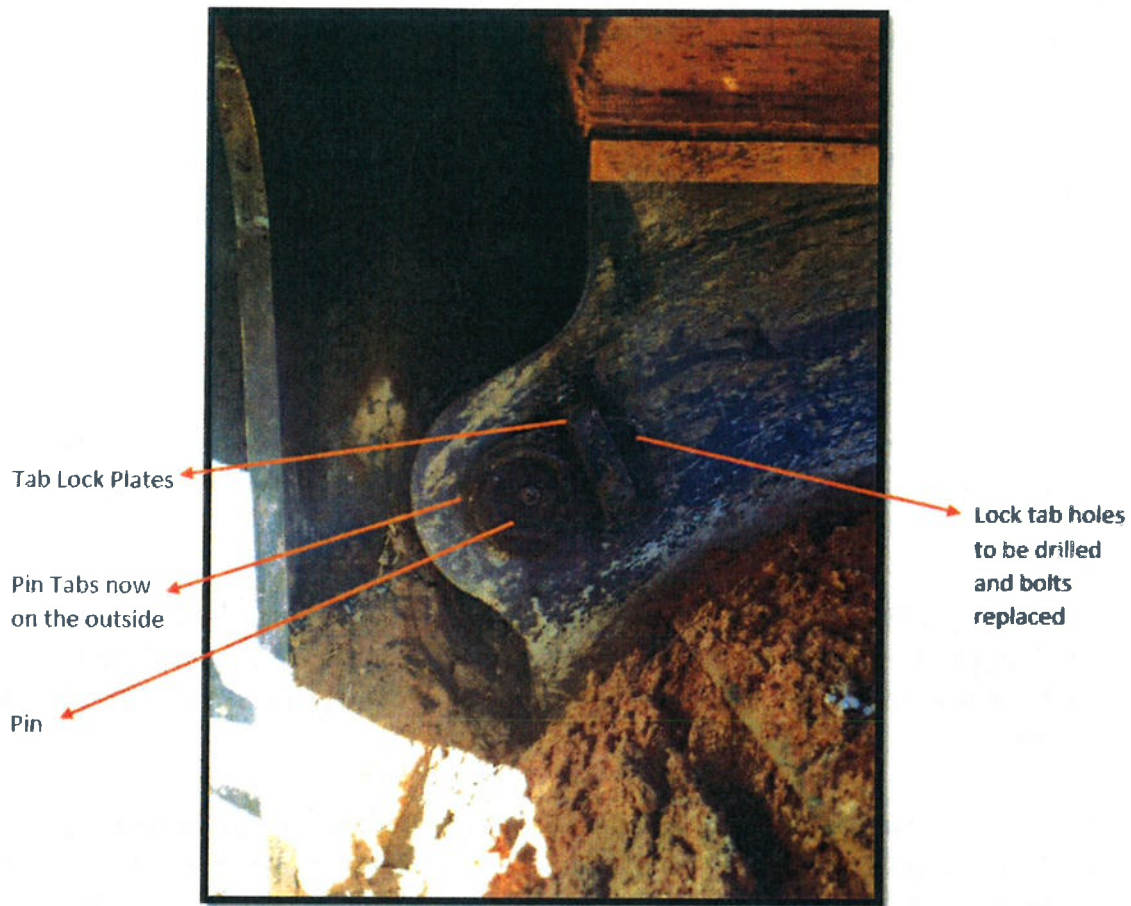


# WINCH MOUNT FAILURE - ROBS

July 2018



## Description

Winch assembly on the ROBS bulldozer anchor machine was found to be faulty (on arrival at the site). On carrying out a visual inspection before using it (to blade the chute) the operator noticed a hole where he thought a pin should be. On inspection of the opposite side, he noticed the pin there had also worked out and not supporting anything. (These pins were the top mounting pins that hold the winch to the dozer). The bottom two pins were still in properly, but the bolt in one had broken and the tab had spun around.

## Contributing Factors

The pin lock bolts had broken and the pins had worked loose due to winch frame movement. It is thought that the holes for the pins could have been originally machined with too much clearance, or being the original Liebherr pins, they could have been worn to start with.

The mounting pins and pin lock bolts had not been checked. The 4 pins that mount the winch unit to the dozer are not greased working pins, they are mount pins only.