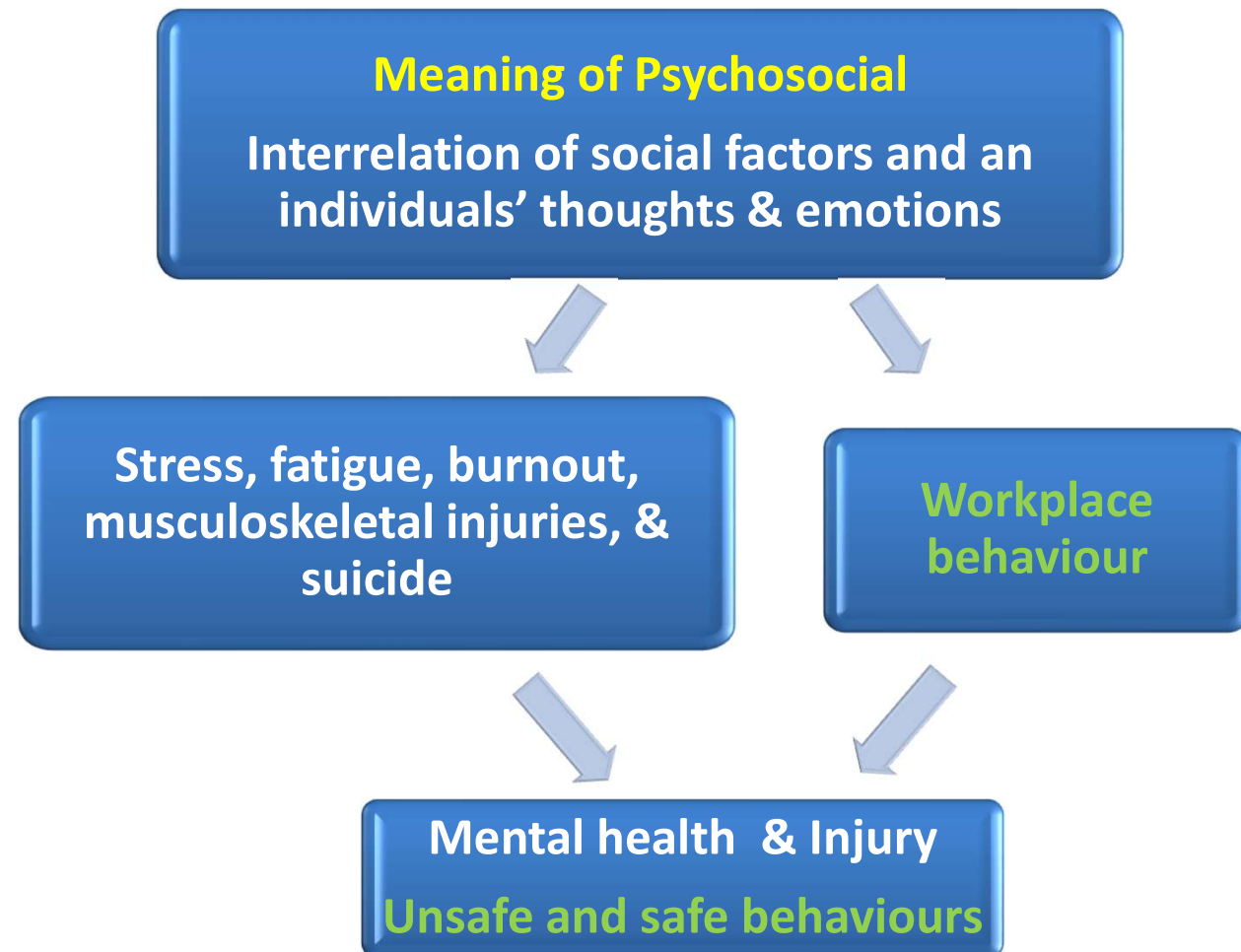




Psychosocial influences on workplace behaviours in Forestry

Shaun Cawood



Recent H&S Development Trends



Health and Safety in Employment Act 1992

hazard— (a) means an activity, arrangement, circumstance, event, occurrence, **phenomenon**, process, situation, or substance (whether arising or caused within or outside a place of work) that is an actual or potential cause or source of harm; and (b) includes— (i) **a situation where a person's behaviour may be an actual or potential cause or source of harm** to the person or another person; and (ii) without limitation, a situation described in subparagraph (i) resulting from physical or mental fatigue, drugs, alcohol, traumatic shock, **or another temporary condition that affects a person's behaviour.**



Health and Safety at Work Act 2015

hazard includes a person's behaviour where that behaviour has the potential to cause death, injury, or illness to a person (whether or not that behaviour results from physical or mental fatigue, drugs, alcohol, traumatic shock, or **another temporary condition that affects a person's behaviour**)
health means **physical and mental health**

Clear Tripartite responsibilities
for a persons behaviour

Psychosocial factors can affect
people's behaviours

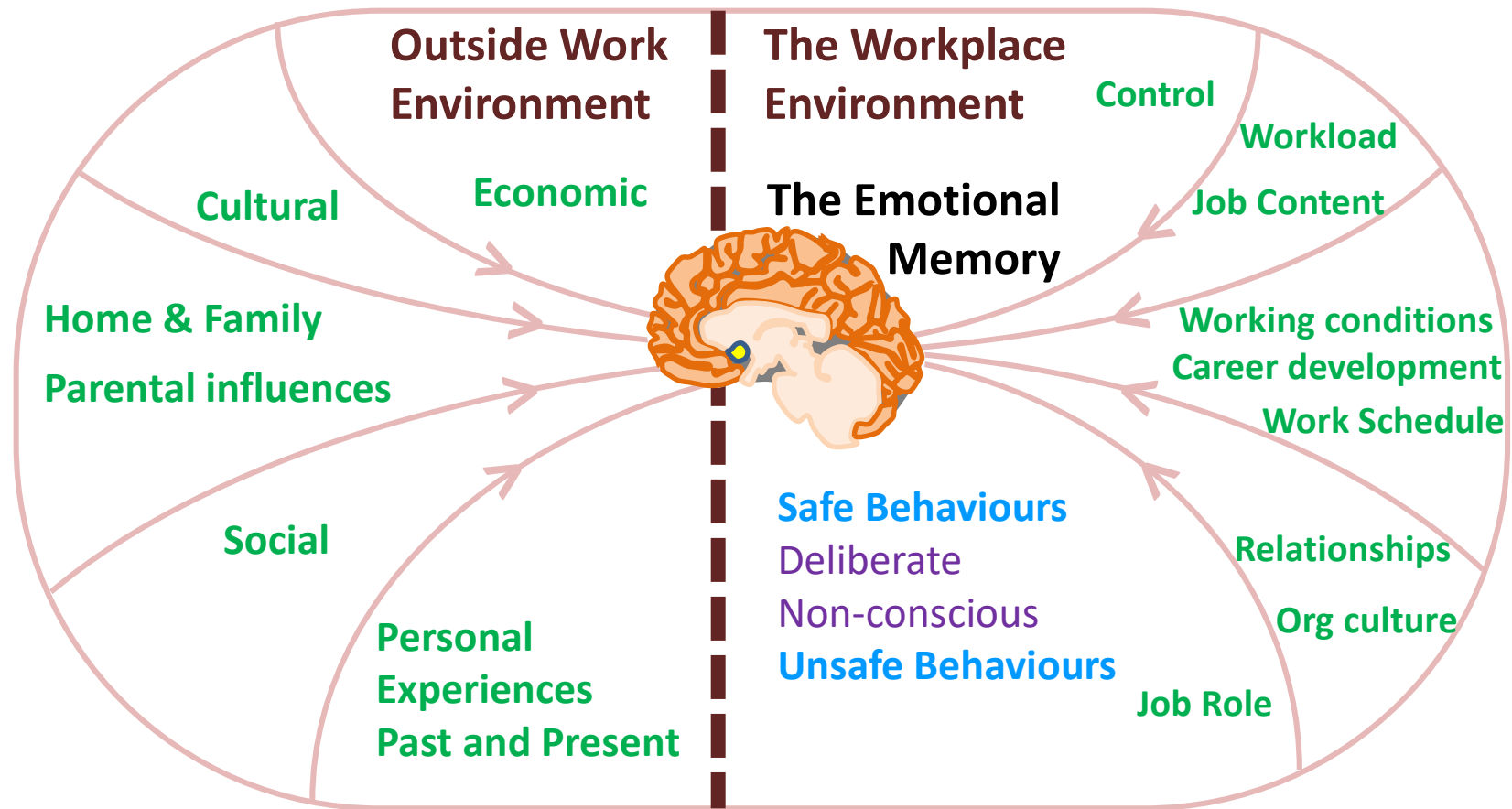
Tree Felling



Risk Homeostasis Theory
Risk Compensation Theory



Interaction Model: **How social influences are carried into the workplace**



Hierarchy of Controls HSW Act Regulations



“Does this intervention allow for variability in human behaviour and is it critical?”

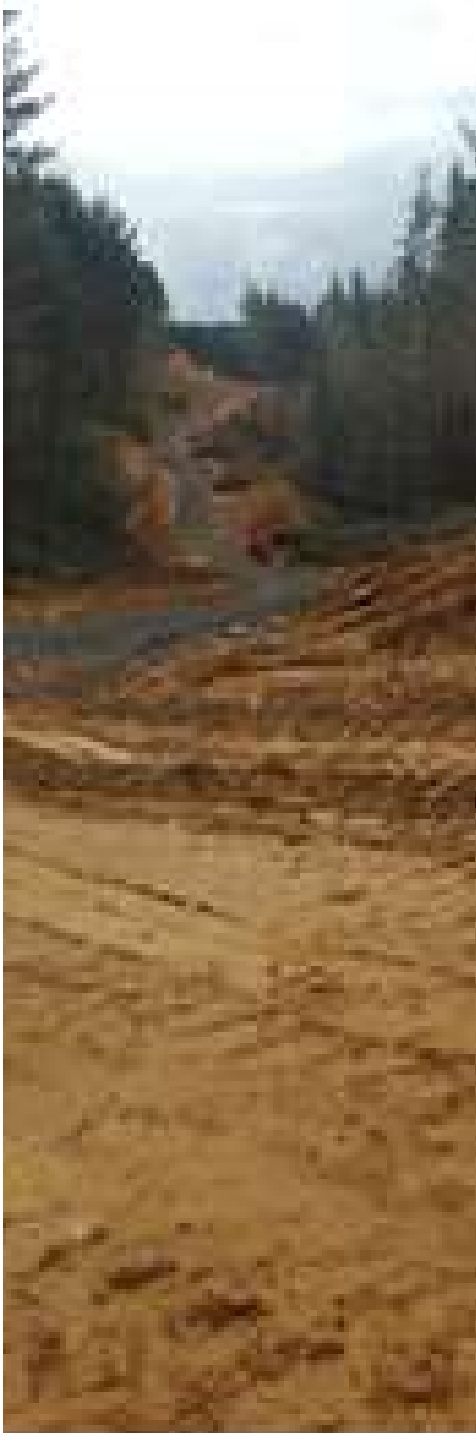
Psychosocial Influences impact on mechanisation as well



Rule:
Stay 6m+ front or
behind or in cab

Sensory overload, concern
over load weight or stability,
loss of control, other
thoughts

Approach digger
operator



“psycho-social issues are a significant factor for forestry workers and represent one of the biggest risks to health and safety at work in this sector”

Research

Review actual workplace accidents looking for psychosocial causes

Test a proposed accident investigation technique to uncover when psychosocial factors are an issue

Apply barrier theory

Possible interventions